
Low Carbon Heatons – Plant, Save and Protect



Low Carbon Heatons Events

Small steps for a big change



Thursday 29th June 2023



Cheshire
Wildlife Trust

Biodiversity and Climate

Adam Linnet



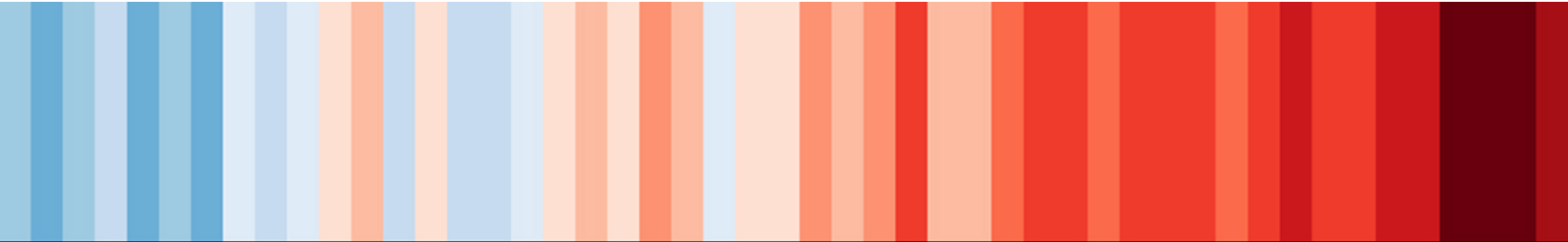


Cheshire
Wildlife Trust

Who are Cheshire Wildlife Trust?



Biodiversity and Climate crisis



Global warming and biodiversity loss 1970 – 2018

GlobalWarming Stripes. #showyourstripes. Data Source UK Met Office CC BY 4.0
From biodiversitystripes.info Data: LPI 2022. Living Planet Index <http://stats.livingplanetindex.org/>





Cheshire
Wildlife Trust

Coincidence or Causation?

Puffins: how Earth is in delicate balance

Clown-like puffins are incredibly popular, the most familiar of any seabird colony. Puffin chicks (they're known as pufflings) are raised on fish such as sandeels. Sandeels feast on marine plankton in the cold waters around the coastline of the UK. But as sea temperatures rise due to climate change, plankton communities are also changing. Sandeels are then becoming a much less reliable food source. The upset of this delicate balance means that former puffin strongholds are seeing more chicks at risk of starving.





Cheshire
Wildlife Trust

Inter-twined Crises





Cheshire
Wildlife Trust

Inter-twined Answers





The Carbon Value of Habitats and Eco-systems

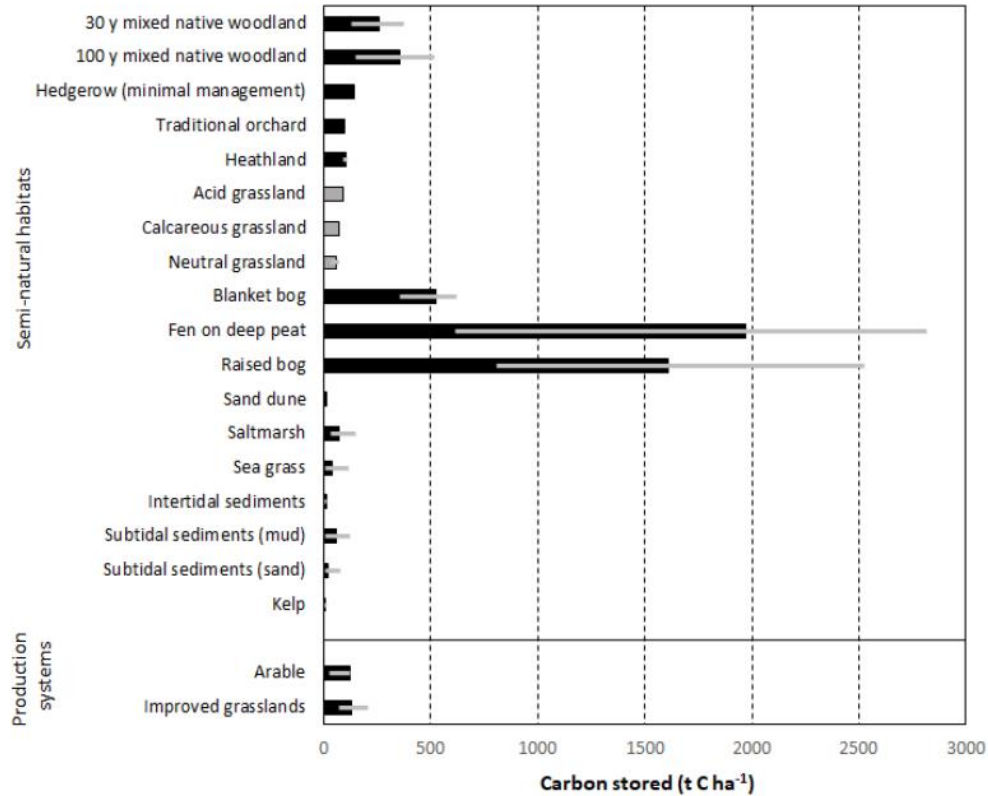


Figure 2 Carbon storage in contrasting habitats and land managements, using the best available data. Note that the semi-natural grasslands data are from the top 15 cm of soil only are shown in grey. Other habitats (shown in black) vary in their depths from 15 cm to 380 cm. Blanket bog carbon stocks are based on catchment scale estimates – see section 4.3. Fen data here are restricted to deep semi-natural fens; there are a range of other types – see Section 4.5. Numerical data and soil depths are provided within the review chapters and Appendix A

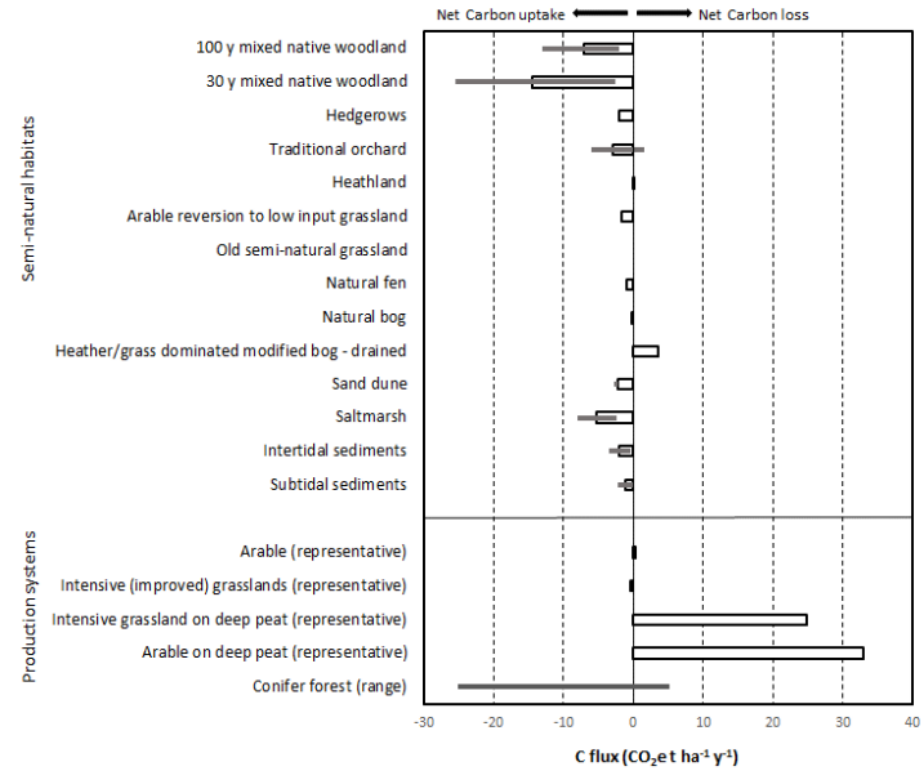
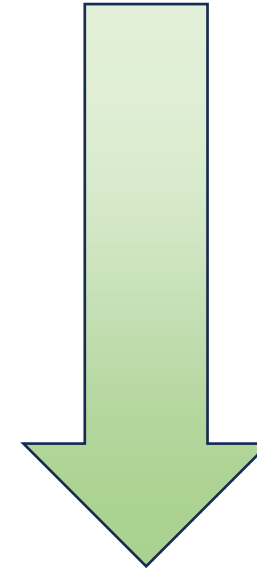


Figure 3 Carbon flux in contrasting habitats and land managements, using representative data. Best available data have been used and includes data from a wide range of different sources, modelled and field data. A negative value indicates sequestration, positive values are emissions. The grey bars indicate the likely range of values across sites where this is available. Habitats with no suitable data are not included and we refer the reader to the chapters where this is reviewed and discussed. Numerical data and soil depths are provided within the review chapters and Appendix B



Simple Answers? Easy Wins?

- Stop damaging peat bogs and other carbon stores, such as soils and trees
- Reduced damage and impact on natural spaces
- Restore natural-processes
- Plant more trees



Avoid

Minimize

Restore

Off-set





Cheshire
Wildlife Trust

Thank you!



Biodiversity and Bees

Damson Tregaskis Hive5 Manchester



Hive5 Manchester



- Provides beehive rental and management to businesses
- Runs beekeeping experiences and courses
- Gives talks at schools and community groups
- Runs pollinator workshops



Diversity of Forage = Diversity of Pollinators

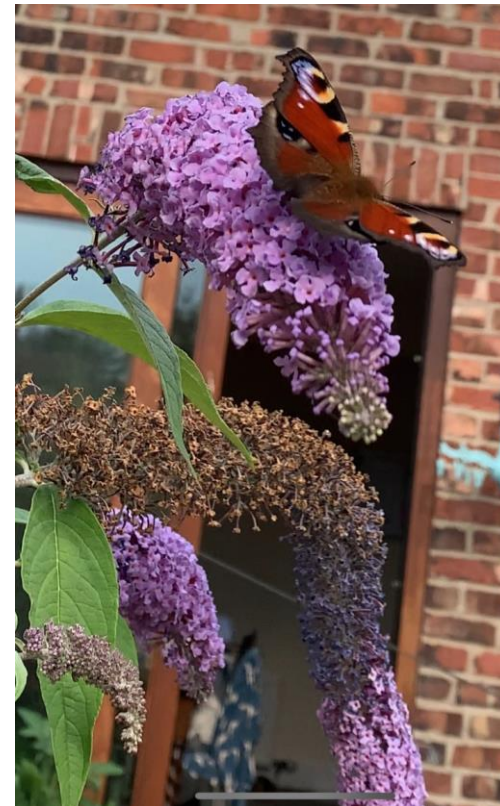


- 250+ species of bee in the UK, over 20000 species worldwide
- Bees aren't the only pollinators
 - Butterflies
 - Moths
 - Flies
 - Wasps!
 - Bats
- All have unique ways of collecting forage which makes them more suited to different plants



What can YOU do?

- Plant stuff! Things that flower throughout the year and a wide variety
- No Mow May
- Leave your leaves
- Provide insect habitats/shelters
- Avoid using pesticides
 - Learn to love wasps!



Mike Hodson – Manchester Urban Diggers







GROWING AND TRADE

To grow and sell fresh, seasonal produce - using natural, low-impact farming methods, to local communities and businesses at fair prices



HEALTH AND WELLBEING

To host therapeutic gardening sessions for the community with the aim to improve physical & mental well-being



GREEN SPACES

To consult on, create and maintain new community gardens for the benefit of local residents and communities



COMMUNITY

To develop spaces for and host regular volunteer sessions and events for diverse groups and cultures, promoting community cohesion



It makes me more optimistic about the future of this area to meet people who care about creating a nice neighbourhood as much as I do.

- Shakespearean Garden Volunteer

Healthy Environment

More composting
Less food waste
Bigger crop diversity
Increased soil health
Increased biodiversity
Reduced food miles

More trees
More green spaces
Educating and inspiring climate action
Carbon sequestration
Increased air quality
Circular economy

Personal Wellbeing

Reduced climate anxiety
Giving back through volunteering
Social and Therapeutic Horticulture
Healthy diet
Socialising
Exercise
Spending time in nature
Better access to organic food
Resilience to crisis
Reduced food bills

Strong Communities

Improved local economy
Reduced social isolation
Direct routes to market
Intergenerational and cultural mixing
Diverse jobs
Shared assets and tools
Resilient local food system
Diverse health services
Alternative education provision
Increased community cohesion
Food and seed sovereignty
Pride in community and local area

Educational workshops and talks
Communal cooking and eating
Green Social Prescribing
Green volunteering opportunities

Local, organically grown produce
Build agroecological networks
Create green sector jobs
Access, improve and protect green spaces

Social groups and events
Skills, knowledge and equipment sharing
Collective action
Safe spaces for everyone to use



1001

...unique volunteers
across all of our
projects

96%

...said their wellbeing
had improved as a
result of volunteering
with MUD

2588

...hours of wellbeing
focused sessions
attended in 2022

5352

...hours of volunteering
completed in 2021

1232

...free hot meals given
out in 2022

75%

...said they felt more
connected to their local
community through
volunteering

9500

...hours of volunteering
completed in 2022

1470

...kg of food grown in
2021 - 2022

83375

...portions of fresh fruit
and veg distributed to
the community in 2022

MOVEMENT BUILDING

To promote sustainable local food production
and a healthy lifestyle





wearemud.org



hello@wearemud.org



@mud_cic
@plattfields_marketgarden



@mud.cic
@plattfieldsmarketgarden



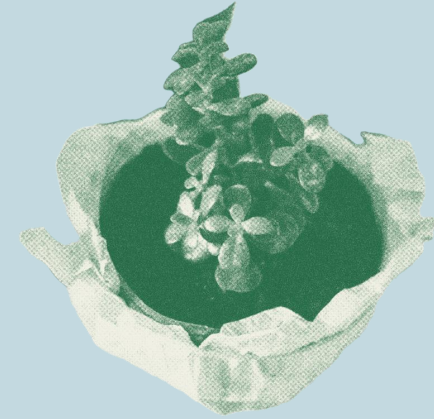
mud-cic



Manchester Urban Diggers CIC

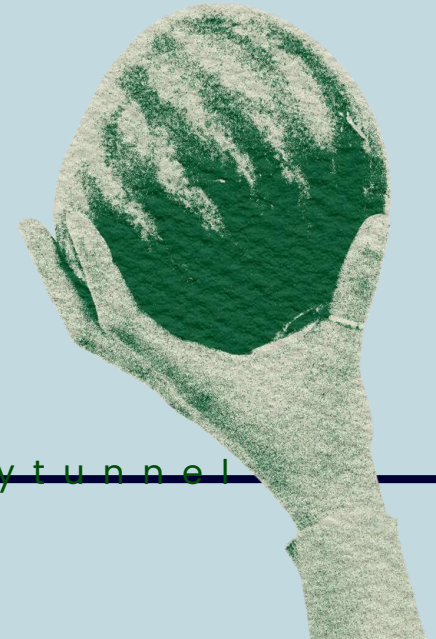
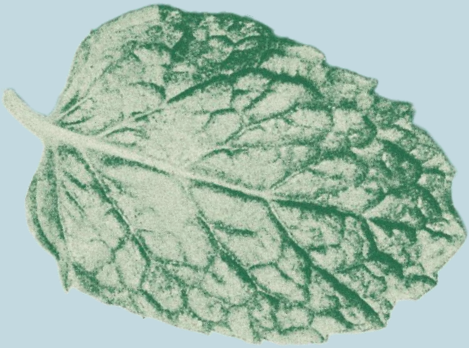


Kell Degnen – Marbury Road Case Study



MARBURY ROAD

Edible Garden



<https://www.justgiving.com/crowdfunding/mreggpolytunnel>



Introduction

We began our growing project on Marbury Road Park in 2022. We wanted to add an orchard to the space and discovered there was a need for food solutions on the housing estate the park serves. We tried to get a food pantry set up and donate fresh produce to our local food bank, all with no luck. During these processes we found out that the easiest way around the policies and procedures of donating fresh food is to grow it and have a free to harvest rule. So with the help of Wayne Bardsley – our Stockport council neighbourhood officer – we installed four simple raised beds and started to grow.



TIME- Line

03

Two kiwi slices are positioned on the left side of the slide. One is a large, detailed slice at the top left, and the other is a smaller, simpler slice below it.

May 2022


Installation of our growing beds and secured new play equipment and safety flooring for the playground.

August 2022


Our first free wellbeing in nature day. We employed local artists and facilitators to showcase the therapeutic benefits of being outside.

A green starburst or leaf-like shape is located in the bottom left corner of the slide.

December 2023

A large, detailed green leaf is positioned in the bottom right corner of the slide.

A pop up fundraiser - The Proper Good Christmas market. We sold mushroom grow kits and an environmentally conscious alternative to glittery reindeer food. We raised £120.

Two kiwi slices are positioned on the left side of the slide. One is a large, detailed slice showing the green flesh and black seeds, and the other is a smaller, similar slice below it.

TIME- Line

04

January 2023

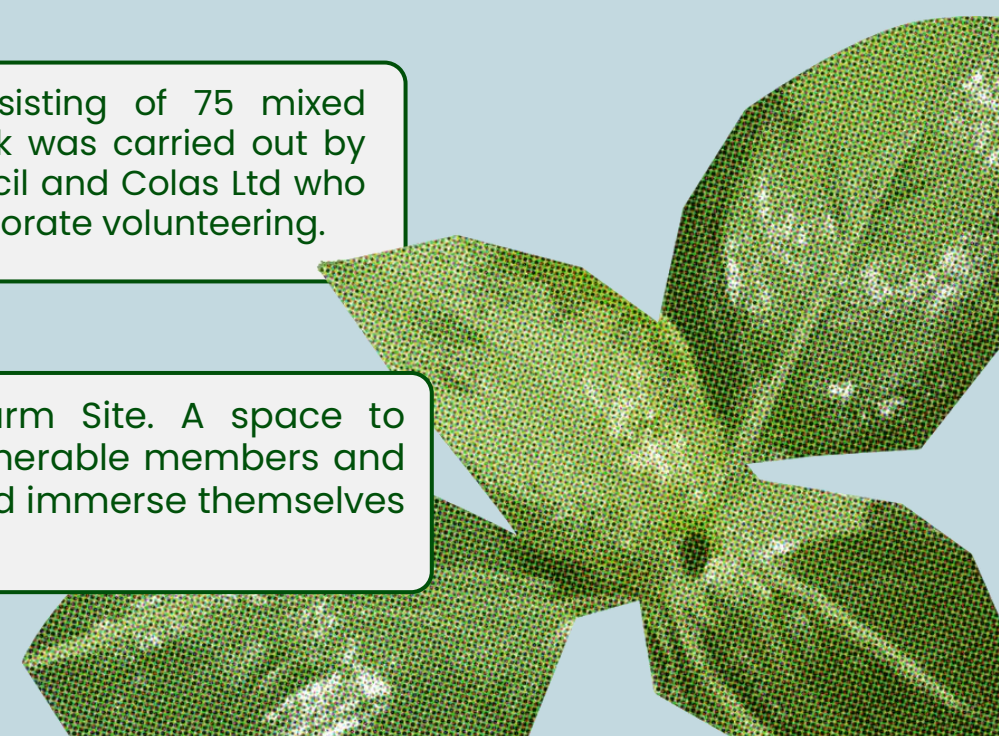
A free Wassail celebration with mulled drinks and a live band, partially funded by the Proper Good Market sales.

February 2023

Planting an orchard consisting of 75 mixed variety fruit trees. The work was carried out by volunteers, Stockport council and Colas Ltd who donated their time via corporate volunteering.

May 2023

Work started on our Farm Site. A space to welcome groups with vulnerable members and extra needs to garden and immerse themselves in nature.

A cluster of green leaves is located in the bottom right corner of the slide. The leaves are detailed with veins and have a slightly textured appearance.

History of our progression

We are very blessed to live in an affluent suburb but both neighbours and the local authorities have highlighted how people are still falling through gaps, we wanted to create a space of self sufficiency, a space for learning and growing for our health, both nutritional value and on a spiritual level.

As we turned up week by week interest grew in our activities and most importantly, the impacts they were having. Charities and community groups got in touch to join us but we were sadly lacking the welfare facilities their clients needed, so we started looking for vacant greenspaces and after a lot of investigation I discovered a way to rent an acre of land that has been stood vacant for 4 years.



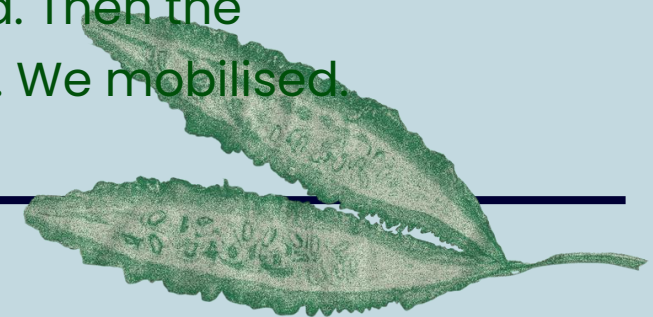


THE Farm Site



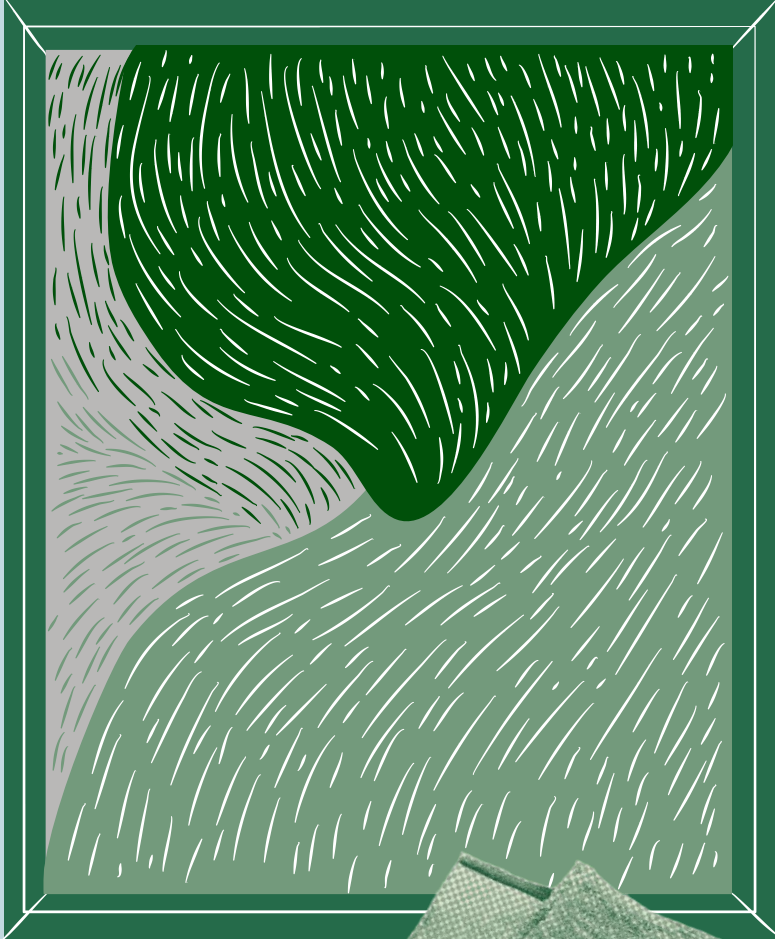
It has taken a lot of work but the acre of land we are renting was meant for us. The land is on Nelstrop Road North, my back garden looks over it and when I first moved into the area it brought magic to my day, I would take my morning brew into my yard and live my best Disney Princess life, pure Cinderella vibes as a wealth of birds would sing their dawn chorus. It's disputed where these bird songs came from but I have no doubt the beautiful hedgerows that lined Nelstrop road north were the origins for this story... Then they vanished. I cried. Then the opportunity to replace them on this side of the shared path arose... We mobilised.

06



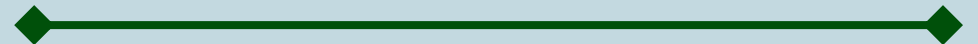
CONCEPTUAL

Growing technologies

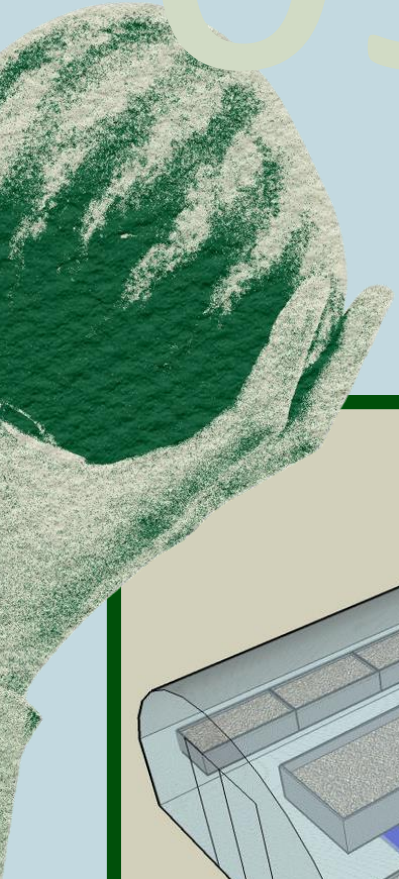


The farm site is completely off grid, there's not even a water source and there has been historical damage to the field drains causing flooding that means it's not fit to graze animals and that surrounding gardens and cellars are often flooded. Our plan for the land is to install a 5 meter wildlife corridor that will have swales with sponge planting and a pond. The fields fencing will be replaced with a double planted hedgerow and natural woven panels.

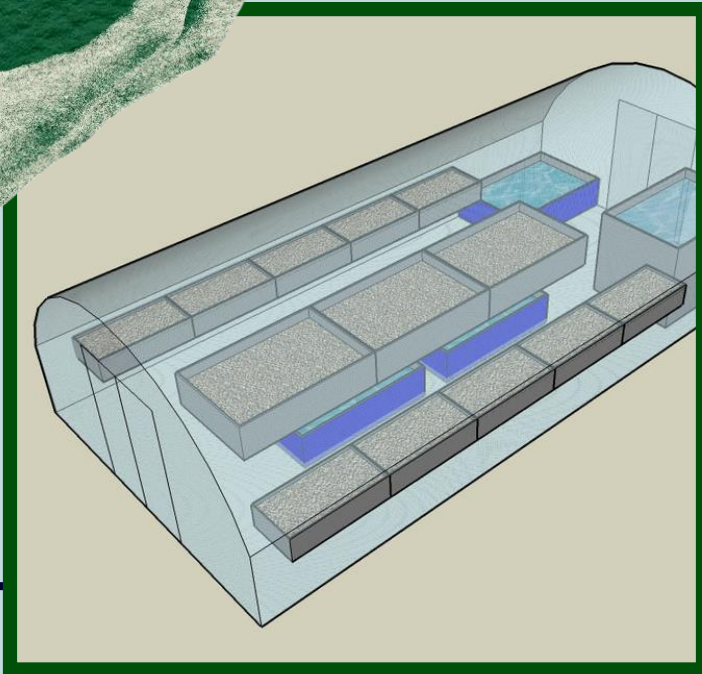
We have a variety of growers on board using lots of different techniques, all of our plots will be used as teaching aides for people who want to learn how to grow,



09



Our next aim is to install an Aquaponics system, farming in this way uses 80% less water than traditional agricultural methods. To pay for this we are seeking donations for the structure and we have set up a system where our produce will be sold through the systems supplier on a profit share basis, our profit share will be used to pay for the equipment and set up costs for the first year, volunteers who donate one hour per week will be entitled to a share of the food crops, our fish will only be available on a wholesale basis initially.



AQUAPONIC FARMING -08

MARBURY ROAD EDIBLE GARDEN

01

08



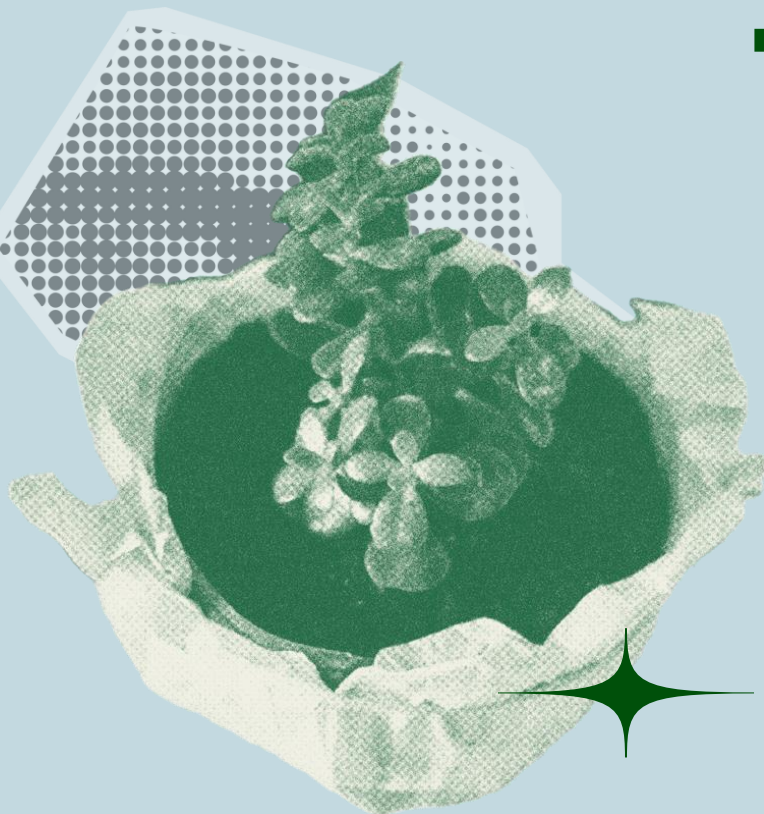


www.justgiving.com/crowdfunding/mregpolytunnel



07393321515

THANK You



marburyroad_ediblegarden

Q&A

Low Carbon Heatons Events

Small steps for a big change

